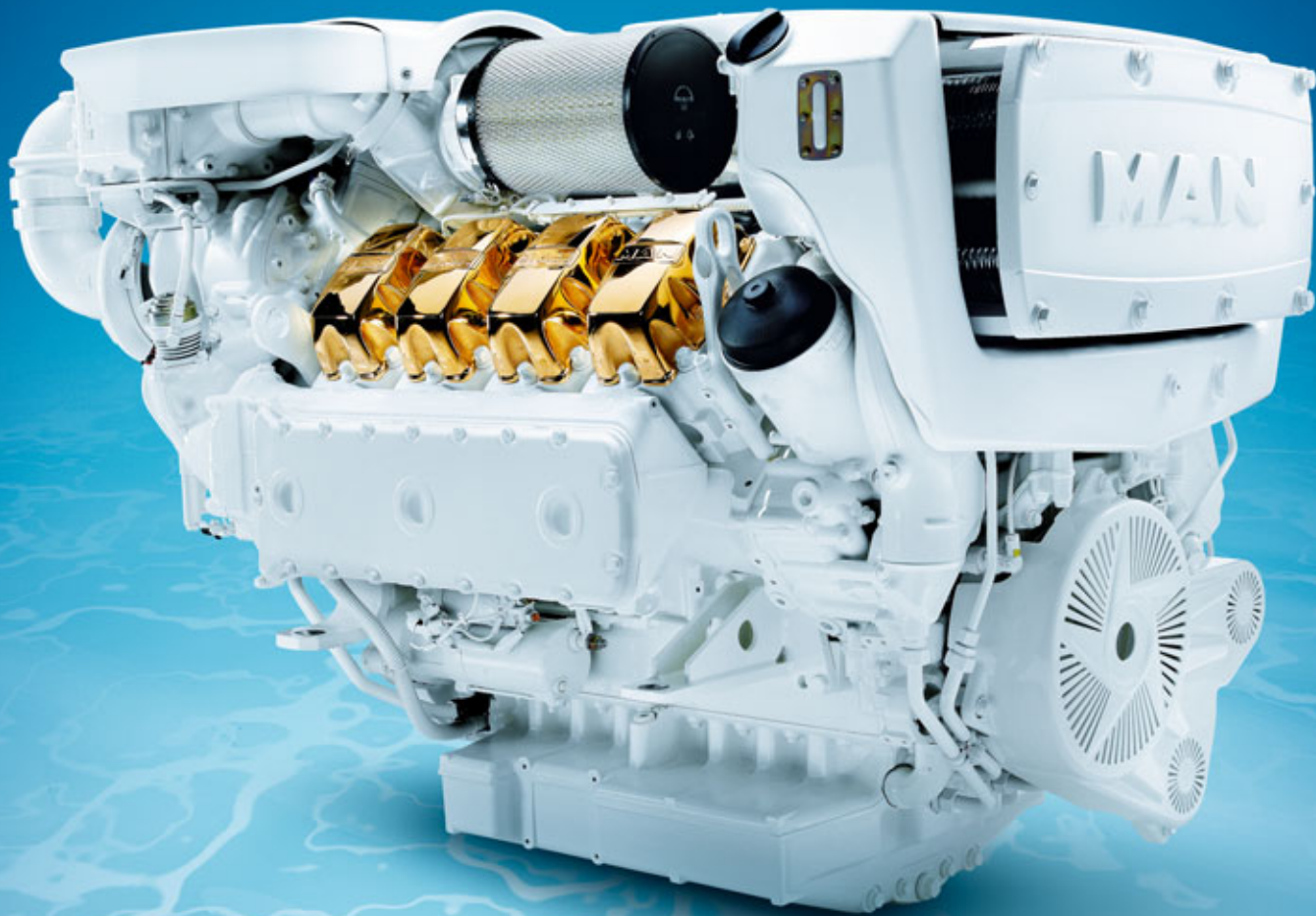


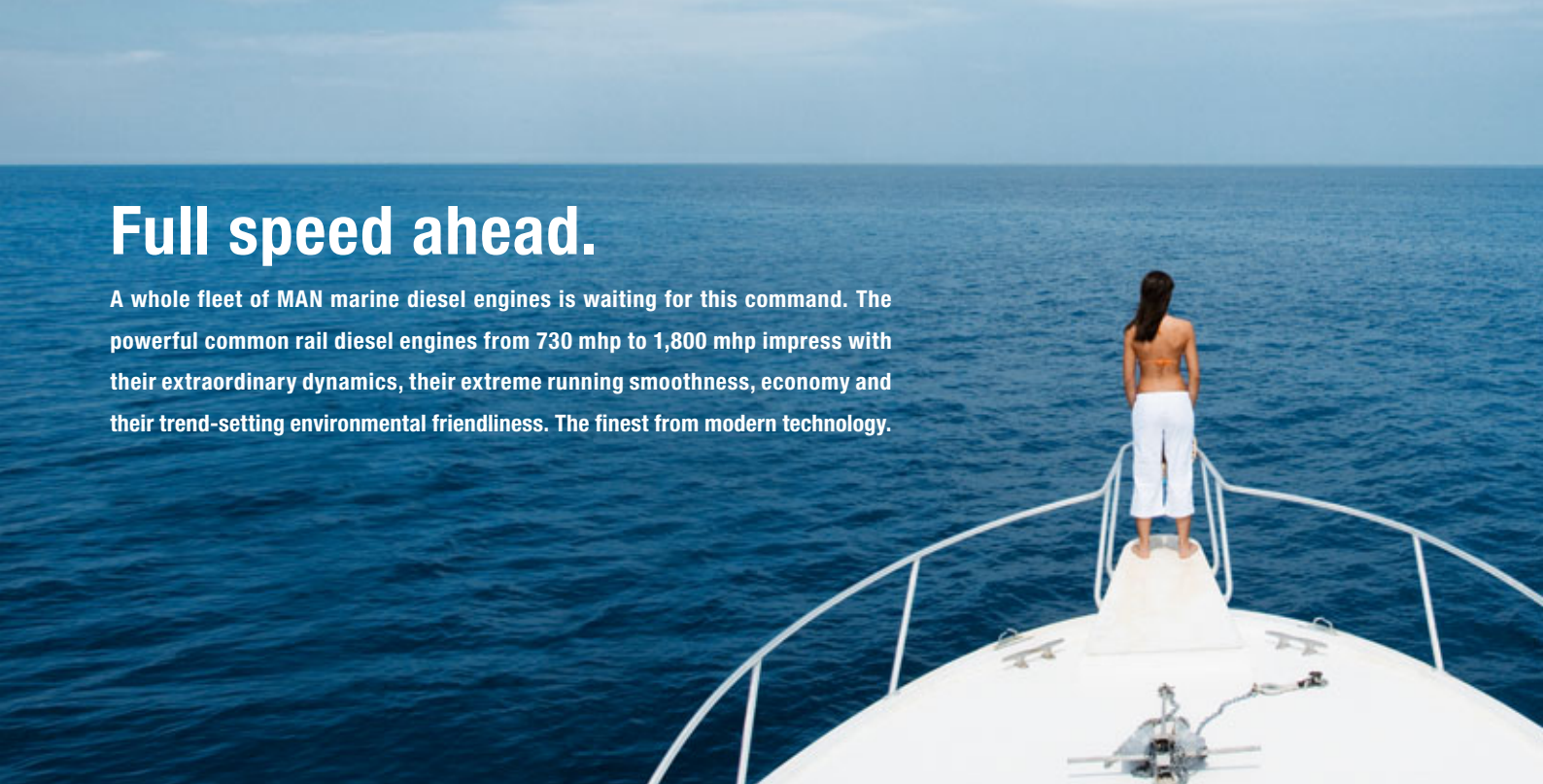
# V8-1000 and V8-1200

MAN high speed marine diesel engines  
for light duty applications.



# Full speed ahead.

A whole fleet of MAN marine diesel engines is waiting for this command. The powerful common rail diesel engines from 730 mhp to 1,800 mhp impress with their extraordinary dynamics, their extreme running smoothness, economy and their trend-setting environmental friendliness. The finest from modern technology.



## Engine description V8-1000 and V8-1200.

| <b>Characteristics</b>    | <b>V8-1000</b>  | <b>specials V8-1200</b>       |
|---------------------------|---|-------------------------------|
| Cylinders and arrangement | 8 cylinders in 90° V design   |                               |
| Operation mode            | 4-stroke diesel engine<br>watercooled   |                               |
|                           | 1-stage exhaust turbocharging<br>intercooler  | 2-stage exhaust turbocharging |
| Number of valves          | 4 valves per cylinder   |                               |
| Fuel system               | Common Rail direct fuel injection with electronic control                                     |                               |
| Engine lubrication        | Closed system with forced feeding, oil cooling and filtering                                  |                               |
| Type of cooling           | Plate heat exchanger, seawater cooled   |                               |
| Engine electric           | Electronic injection control (EDC)<br>Electronic engine monitoring including diagnostic unit  |                               |
| Exhaust gas status        | IMO/MARPOL 73/78, EPA Tier 2 (only for private use),<br>Recreational Craft Directive 94/25/EC |                               |
| Fuel                      | DIN EN 590  |                               |

| <b>Dimensions</b>   |    | <b>V8-1000</b> | <b>V8-1200</b> |
|---|----|----------------|----------------|
| A-Overall width of engine                                     | mm | 1,153          | 1,153          |
| B-Overall length of engine                                    | mm | 1,736          | 1,745          |
| C-Overall height of engine                                    | mm | 1,236          | 1,225          |
| D-Top of engine to crankshaft centre                          | mm | 825            | 811            |
| E-Length of engine from front end to edge of flywheel housing | mm | 1,243          | 1,262          |

For detailed examinations of installation dimensions, please order drawings from our factory.

### MAN engines have outstanding qualities

- High tractive power even at low speeds
- Powerful acceleration and rapid reaction to commands
- High performance combined with low weight
- Compact, space-saving design
- Large operation range owing to low consumption
- Low running costs and long service life
- Low emission values
- World-wide service network with rapid supply of spare parts

### Technical data

| Type of engine                                |          | V8-1000       | V8-1200       |
|---|----------|---------------|---------------|
| Displacement                                  | l        | 16.16         | 16.16         |
| Maximum output to DIN ISO 3046-1 <sup>1</sup> | kW (mhp) | 735 (1,000)   | 882 (1,200)   |
| Rated speed                                   | rpm      | 2,300         | 2,300         |
| Maximum torque                                | Nm       | 3,340         | 4,010         |
| at speed                                      | rpm      | 1,200 - 2,100 | 1,200 - 2,100 |
| Weight (dry)                                  | kg       | 1,780         | 1,875         |
| Fuel consumption at rated power               | l/h      | 190           | 226           |

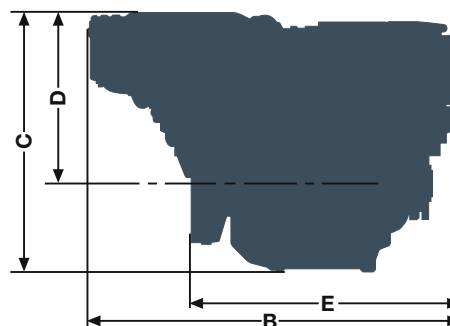
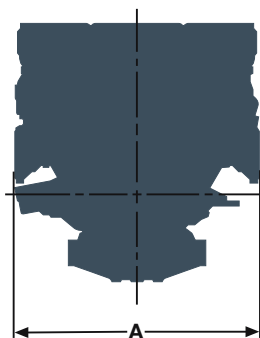
<sup>1</sup> The ratings are only for operation of private yachts.

### Definition of light duty operation

|                                 |  |
|---------------------------------|--|
| Annual operating hours          | < 1,000                                    |
| Percentage of time at full load | ≤ 20%                                      |
| Average load application        | ≤ 50%                                      |
| Particular operation conditions | no wide-open throttle<br>below rated speed |

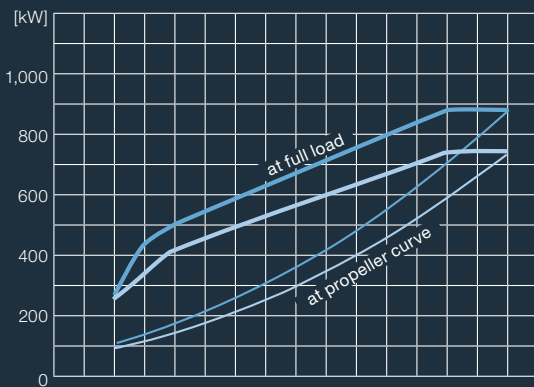
### Typical applications

- Escort boats and patrol boats
- Ambulance boats
- Pleasure crafts
- Police boats

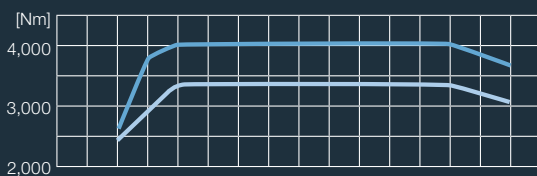


# Power charts.

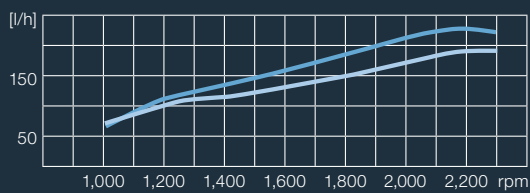
Power V8-1000 and V8-1200



Torque V8-1000 and V8-1200



Fuel consumption V8-1000 and V8-1200



- V8-1200 with 882 kW (1,200 mhp at 2,300 rpm)
- V8-1000 with 735 kW (1,000 mhp at 2,300 rpm)

## MAN Diesel SE

Vogelweiherstrasse 33  
90441 Nuremberg, Germany  
Phone +49 911 420-0  
highspeed@mandiesel.com  
www.mandiesel.com